

# 316 Stainless Steel Compact Fittings

316 Stainless Steel NPT Thread  
Flexible Metal Conduit (LFMC) Fittings



## Construction

- 316 Stainless Steel fitting, has a four piece construction consisting of a gland nut, sealing ring, high tensile grounding ferrule and body.
- Included sealing washer and galvanized steel lock nut provides a means for connecting the fitting to boxes.
- Excellent corrosion resistance, strength and durability.

## Installation

- Fitting is ideal for use with standard liquid-tight conduit to allow easy installation. IP 66/67 Rated when installed with approved conduit.
- Approved for both exposed and concealed locations. Rated for temperature ranges -49°F to + 221°F (-45°C to +105°C).
- Suitable for harsh industrial, food and beverage, petrochemical, waste water, salt water and other corrosive applications.
- Suitable for use in hazardous locations per NEC Articles 501 Class I Div. 2, Article 502 Class II Div. 1 & 2, Article 503 Class III Div. 1 & 2.
- Compact design is ideal for tight spaces.
- Complies with UL Standard 514B File No. E234207.



Straight and 90° - NPT Thread 3/8" through 2"

## NEC Articles

- Article 501.10 (B) (2) Class I Div. 2
- Article 502.10 (A) (2) and (B) (2) Class II Div. 1 & 2
- Article 503.10 (A) (3) and (B) Class III Div. 1 & 2

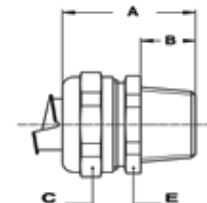
[www.ul.com](http://www.ul.com)  
[www.nfpa.org](http://www.nfpa.org)  
[www.nema.org](http://www.nema.org)

[www.csa-international.org](http://www.csa-international.org)  
[www.naed.org](http://www.naed.org)  
[www.anametelectrical.com](http://www.anametelectrical.com)



## 316 S/S Straight Compact Fittings

Size NPT	Sealtite Size (inch)	Min. Internal Bore (mm)	Dimensions in inches					Standard Package	PIN Number	Weight (lbs/100)
			A	B	C	D	E			
1/2"	3/8"	10.4	1.259	0.472	1.023	-	0.944	10	71411292	10.1
1/2"	1/2"	13.8	1.388	0.472	1.141	-	1.063	10	71411692	11.9
3/4"	3/4"	18.5	1.378	0.472	1.378	-	1.299	5	71412092	17.2
1"	1"	23.8	1.456	0.511	1.771	-	1.732	5	71412692	31.3
1-1/4"	1-1/4"	31.9	1.653	0.590	2.086	-	2.047	2	71413592	43.2
1-1/2"	1-1/2"	36.9	1.889	0.630	2.440	-	2.362	2	71414092	65.5
2"	2"	47.9	2.126	0.748	2.992	-	2.834	2	71415092	105.4



## 316 S/S 90° Compact Fittings

Size NPT	Sealtite Size (inch)	Min. Internal Bore (mm)	Dimensions in inches					Standard Package	PIN Number	Weight (lbs/100)
			A	B	C	D	E			
1/2"	3/8"	10.4	1.063	0.472	1.023	1.260	0.944	10	71451292	15.9
1/2"	1/2"	13.8	1.181	0.472	1.141	1.338	1.063	10	71451692	18
3/4"	3/4"	18.5	1.338	0.472	1.378	1.574	1.299	5	71452092	38.6
1"	1"	23.8	1.614	0.511	1.771	1.929	1.653	5	71452692	64.8
1-1/4"	1-1/4"	31.9	1.811	0.511	2.086	1.968	2.047	2	71453592	93.5
1-1/2"	1-1/2"	36.9	2.204	0.551	2.441	2.244	2.362	2	71454092	128.3
2"	2"	47.9	2.441	0.630	2.992	2.677	2.834	2	71455092	212.1

